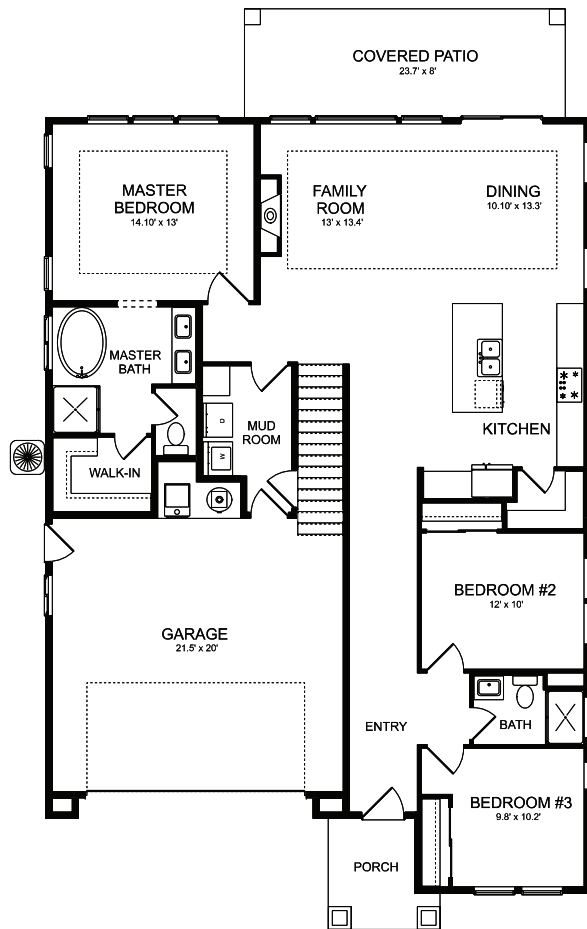


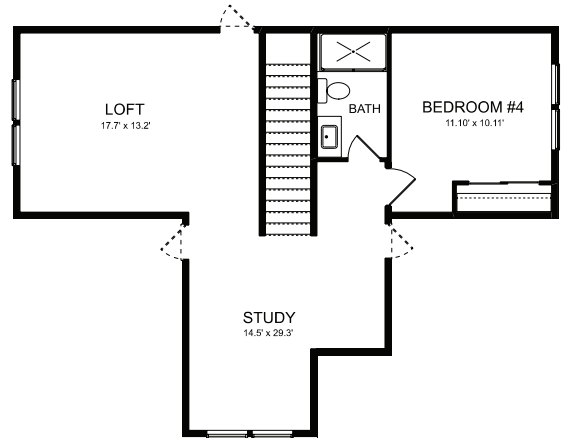
STERLING HEIGHTS - RESIDENCE 4

APPROX 2,352 SQ FT | 4 BEDROOMS | 3 BATHS

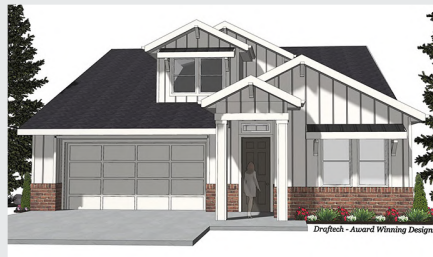
FIRST



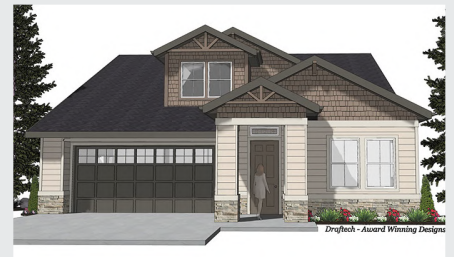
SECOND



MODERN



FARMHOUSE



CRAFTSMAN



Sterling Homes and Discovery Homes reserve the right to modify features, specifications, plans, elevations and pricing without notice and/or obligation. Standards and optional specifications vary per plan type. All square footage is approximate. Not all features are available in all plans. Entry, porches, ceilings, window sizes and wall configurations vary per plan and elevation. All renderings, maps, displays and handouts are for illustration purposes only and may not accurately depict the actual condition of the item being represented. See our sales representatives for details. Prices subject to change without notice. CA DRE#01519331